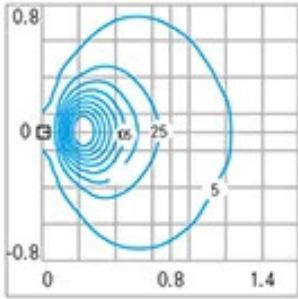
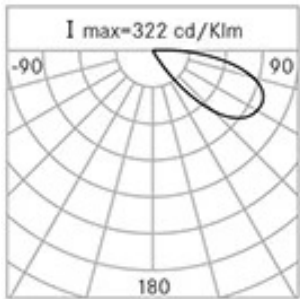
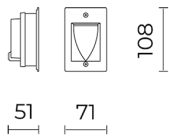




General Features

Description:	Recessed LED product
Insulation class:	class II
Rated voltage:	230 V 50 Hz
Protection Grade:	IP65
Impact protection:	IK06
Power Factor:	> 0.90
Ambient temperature Ta:	-30°C +50°C
Weight:	0.30 kg
Max exposed surface:	0,06 m ²
Lateral exposed surface:	0,005 m ²
Driver:	included
Marks and Certifications:	CE



Performance Data*

Source flux:	300 lm
Source power:	4 W
Source efficiency:	75 lm/W
Device flux:	95 lm
Device power:	4.5 W
Appliance efficiency:	21 lm/W

Product Sheet

Rev. 23/07/2024

Fin xs Wall-Recessed

Options: FIN XS-vertical

Color Temperature: 3000 K

Type of optics: AS-D Asymmetric diffused beam

06FX2B2397D

Colour: White RAL9003

Optical System

Source: LED

Color Temperature: 3000 K

Color Rendering Index (CRI): ≥ 80 Chromatic consistency (SDCM): ≤ 3

Type of optics: AS-D Asymmetric diffused beam

Optical group life: $>35.000\text{h}$ @Ta25°C L80B10**Normative References**

EN60598-1 / EN60598-2-2 / EN62471

Installation and maintenance

Installation: recessed

Fixing: Wall-recessed housing: polymer printed provided with the product

Ø power cable: 8 ÷ 12 mm

Cable gland: M20

MaterialsBody: die-cast aluminium alloy UNI EN AB 47100 (copper content $< 1\%$)

Diffuser: sandblasted flat glass

Seals: EPDM die cut / printed

Screws: stainless steel AISI 304

Finish: phospho-chromatation treated and polyester powder-coated in 16 phases to increase weather resistance

Colors White RAL9003Code: **06FX2B2397D**

Product Sheet

Rev. 23/07/2024

Fin xs Wall-Recessed

Options: FIN XS-vertical

Color Temperature: 3000 K

Type of optics: AS-D Asymmetric diffused beam

06FX2B2397DColour: White RAL9003

NOTES***Performance data**

The values indicated in this data sheet are nominal values with a tolerance of $\pm 7\%$.

Source flux and source efficiency data refer to the LED module without optics; in case you are interested in the performance of the LED module complete with optical system, you must multiply the data reported by the factor 0.9.

General Data

The characteristics of the product listed may be subject to change and must be confirmed when ordering.

In order to promote constant updating of its products, Cariboni Group reserves the right to make changes without prior notice.