



General Features

Description:	LED floodlight
Insulation class:	class II
Rated voltage:	220-240 V 50 Hz
Protection Grade:	IP66
Impact protection:	IK08
Power Factor:	> 0.9
Ambient temperature Ta:	-30°C +50°C
Weight:	2.00 kg
Max exposed surface:	0,027 m²
Lateral exposed surface:	0,027 m²
Drivers:	included
Marks and Certifications:	CE



Performance Data*

LED Current:	500 mA
Source flow:	1875 lm
Source power:	17 W
Source efficiency:	110 lm/W
Device flow:	1310 lm
Device power:	20 W
Appliance efficiency:	66 lm/W
Glare Index Category:	D6

Optical System

Source: CoB LED

Color Temperature: 4000 K

Color Rendering Index (CRI): ≥ 90

Color Consistency (SDCM): ≤ 3

Type of optics: wide beam 45°

Optical group life: >60.000h @Ta25°C L80B10

Photobiological safety class: EXEMPT GROUP

ULOR: 0%

DLOR: 100%

Light intensity category: G*6

Normative References

EN60598-1 / EN60598-2-3 / EN62471 / EN61547

Installation and maintenance

Installation: ceiling / wall / ground / pole side

Pole diameter: Ø 102 mm

Tilt: -90° +45°, continuously-adjustable pointing and locking system

Fixing: fixing base made of die-cast aluminium alloy UNI EN AB 47100 (copper content < 1%) for poles Ø 60-76mm

Wiring: pre-wired product with cable L=5m

Ø power cable: 9 ÷ 14 mm

Cable Gland: M29

Power supply compartment: independent from the optical group

Flow adjustment

On request

DALI control

X

Materials

Body: die-cast aluminium alloy UNI EN AB 47100 (copper content < 1%)

Screen: tempered flat glass

Lenses: highly transparent technopolymer lenses

Fixing system: die-cast aluminium alloy UNI EN AB 47100 (copper content < 1%)

Seals: expanded anti-age silicone foam

Screws: stainless steel AISI 304

Wiring plate: zinc-plated steel

Finish: phospho-chromatation treated and polyester powder-coated in 16 phases to increase weather resistance

Colors

■ Sablé 100 Noir

Code: **06OM2A140B0C**

Product Sheet

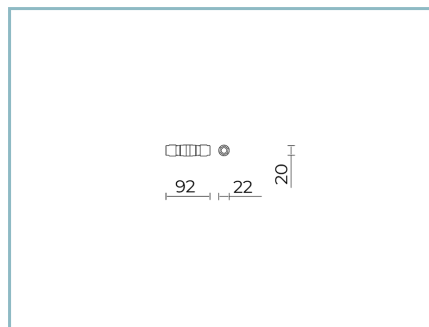
Rev. 27/09/2023

Omikron Pole

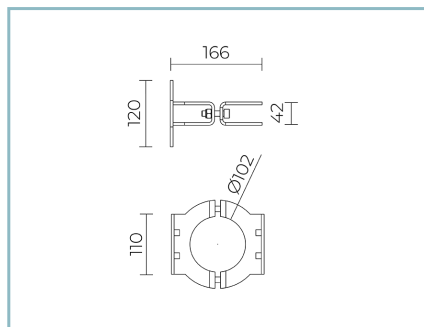
Options: for poles \varnothing 102 mm
Color Temperature: 4000 K
Type of optics: wide beam 45°

06OM2A140B0C

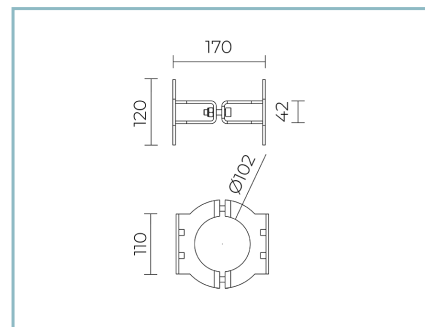
Colour: Sablé 100 Noir

Complements**06KS918C0**

B137 2 - way connector IP68

**06OM904C0**

B136 Single pole ring
for \varnothing 102 mm. Colour: Sablé 100 Noir.

**06OM905C0**

B137 Double pole ring
for \varnothing 102 mm. Colour: Sablé 100 Noir.

NOTES***Performance data**

The values indicated in this data sheet are nominal values with a tolerance of +/-7%.

Source flux and source efficiency data refer to the LED module without optics; in case you are interested in the performance of the LED module complete with optical system, you must multiply the data reported by the factor 0.9.

General Data

The characteristics of the product listed may be subject to change and must be confirmed when ordering.

In order to promote constant updating of its products, Cariboni Group reserves the right to make changes without prior notice.